

Ultrasound & Optical Biometry

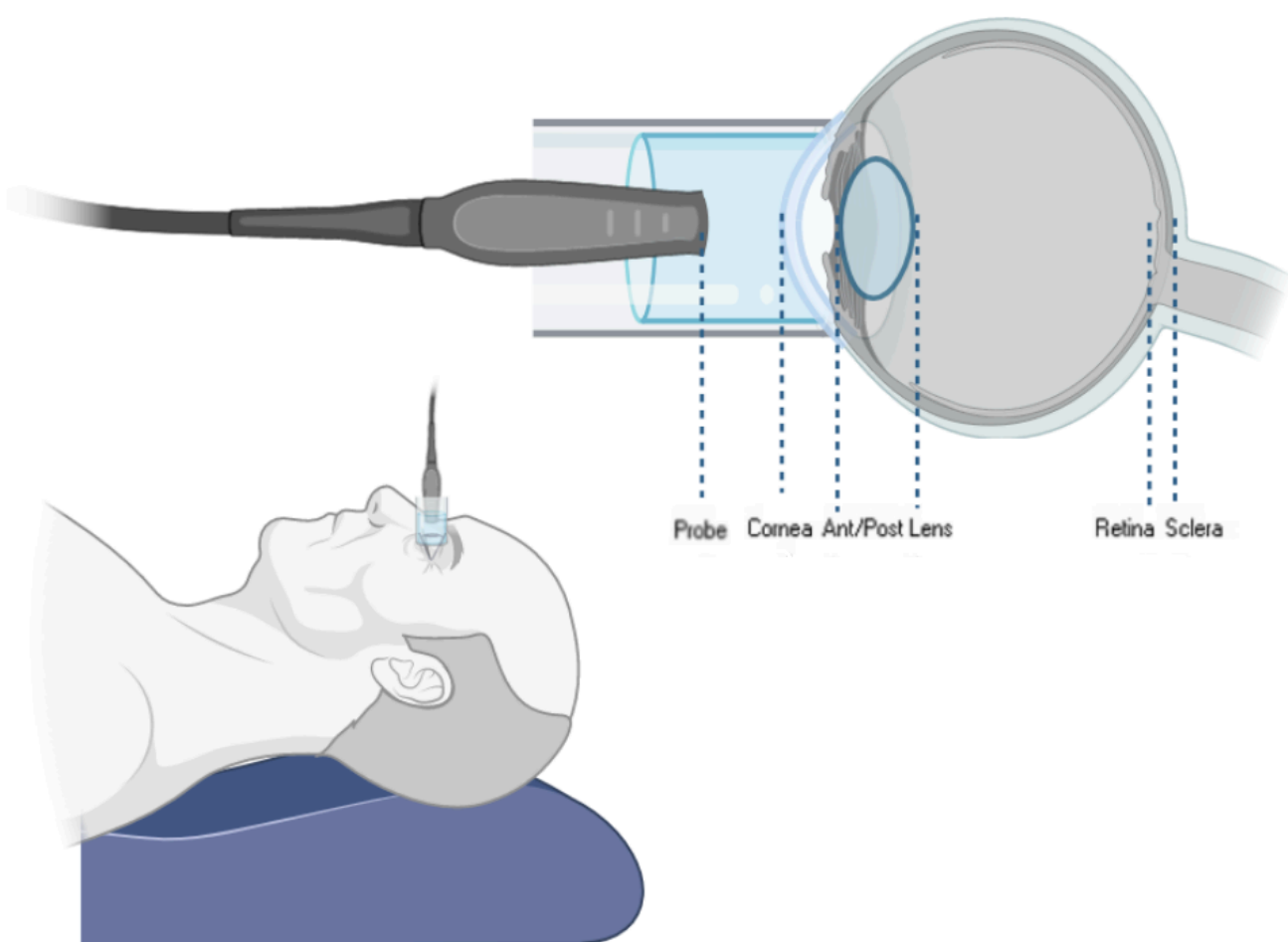


Biometry measures the ocular structures of your eyes before surgery. The surgeon will use these measurements to calculate the lens that will be placed in your eye. You have an option to choose between **ultrasound biometry & optical biometry**.

Khalaf, A., Richins, T., Samuel, A., Abtahi, M., Miller, G., Sabeti, S., Baig, K.

What is Ultrasound Biometry

- Ultrasound biometry uses sound waves to measure the length of the eye.
- This method is **OHIP covered**.
- **What to expect:**
 - You will be reclined and given anesthetic drops that will not affect your vision.
 - The technologist will create a water bath in front of your eye. The ultrasound probe will then be immersed in the water, not touching the eye.



- **What lenses are available to you?**
 - Only the OHIP covered lens is recommended with this method.

What is Optical Biometry

- Optical biometry uses laser waves to obtain multiple measurements of the eye. This method is more precise and more accurate in collecting these measurements.
- The optical biometer is **not OHIP covered**. There is a fee of **\$200 per eye**.
- The optical biometer is recommended by your surgeon.
- **What to expect:**
 - You will be asked to place your chin and forehead in the machine. The measurements will be taken in less than a couple of minutes.



- **What lenses are available to you?**
 - Both OHIP covered and non-OHIP covered lenses are available.

Please see the next page for lens options.

When will I have to decide?

Your designated surgical coordinator will get in touch with you to book your pre-op appointment before your surgery. Please read through this document to understand which method of biometry and type of lens you would like to proceed with.

Do NOT stop taking your regular, prescribed drops for your pre-op appointment.

Ultrasound & Optical Biometry



Biometry measures the ocular structures of your eyes required before surgery. The surgeon will use these measurements to calculate the lens that will be placed in your eye. You have an option to choose between **ultrasound biometry & optical biometry**.

Khalaf, A., Richins, T., Samuel, A., Abtahi, M., Miller, G., Sabeti, S., Baig, K.

Pre-op measurement Instructions

- Bring the following to Precision Cornea/Glaucoma Centre:
 - Your Ontario Health Card or other insurance coverage information
- Do not stop taking any eye drops you were previously taking. This appointment does not change your drop routine.
- You will not be given dilating drops, so your vision will be unaffected. You will be able to drive to and from your pre-op appointment.

IMPORTANT

**Use artificial tears/lubricating drops
four times daily
starting 2 weeks prior to your
pre-op appointment.**



Use Artificial Tears



Additional Notes

- **Date:** _____
- **Location:** Precision Cornea/Glaucoma Centre

Lenses

OHIP Covered Monofocal Lens

- This Monofocal lens corrects vision at a single distance
- Does not correct for astigmatism

Other Lenses

- **Tecnis 1-Piece Monofocal** **\$150**
 - Monofocal lens that corrects vision at a single distance
 - Enhanced night vision compared to the OHIP lens
 - Does not correct for astigmatism
- **Tecnis 1-Piece Toric Monofocal** **\$560**
 - Monofocal lens that corrects vision at a single distance
 - Enhanced night vision compared to the OHIP lens
 - Can decrease astigmatism
- **Tecnis Eyhance Monofocal +** **\$410**
 - Monofocal + provides enhanced depth of vision for intermediate range in addition to distance
 - Enhanced night vision compared to the OHIP lens
 - Does not correct for astigmatism
- **Tecnis Eyhance Toric Monofocal +** **\$910**
 - Monofocal + provides enhanced depth of vision for intermediate range in addition to distance
 - Enhanced night vision compared to the OHIP lens
 - Can decrease astigmatism

Note:

- You will have your astigmatism measured at your pre-op appointment.
- Distance glasses *may* be needed after surgery. Reading glasses are typically required.
- If you have advanced glaucoma, your surgeon may only recommend Monofocal lenses.
- These are our commonly recommended lenses, however there are other lens options used in specific situations.